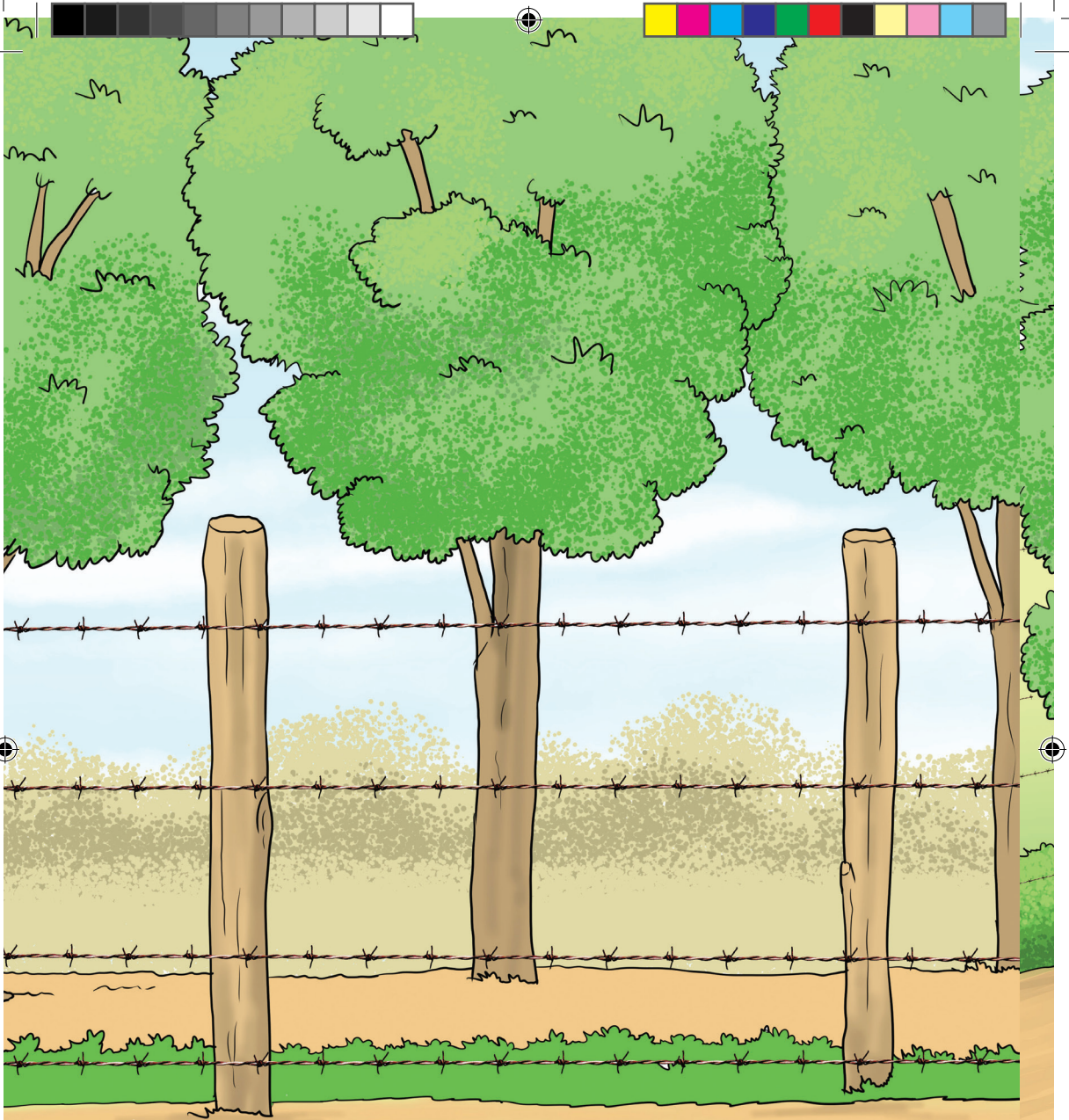


Ūūrīa nī mūciī wa ithe wa
Wanjikū.

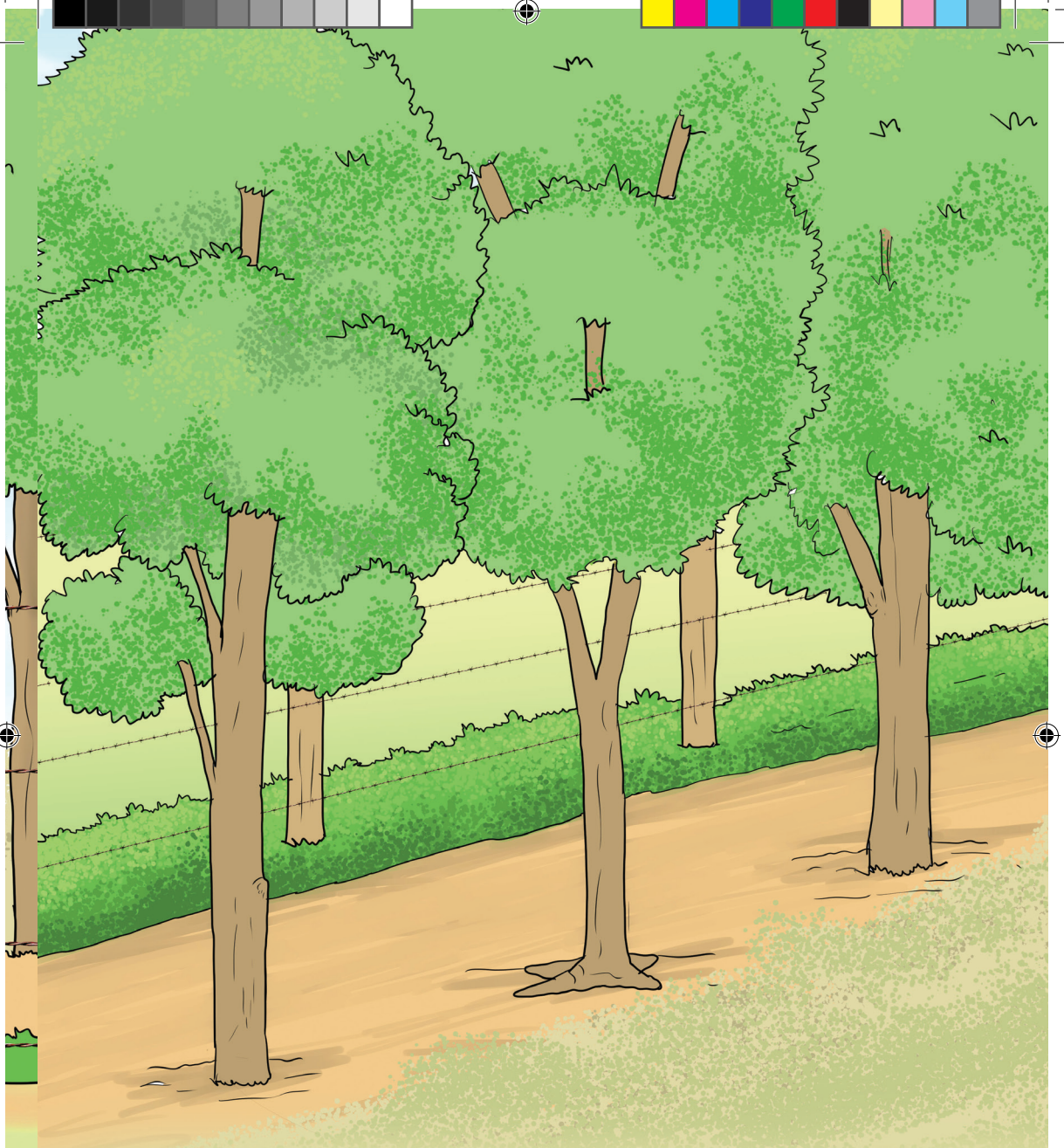
1





Mūciī ithe wa Wanjikū wīna
rūgiri rūthaka.

2



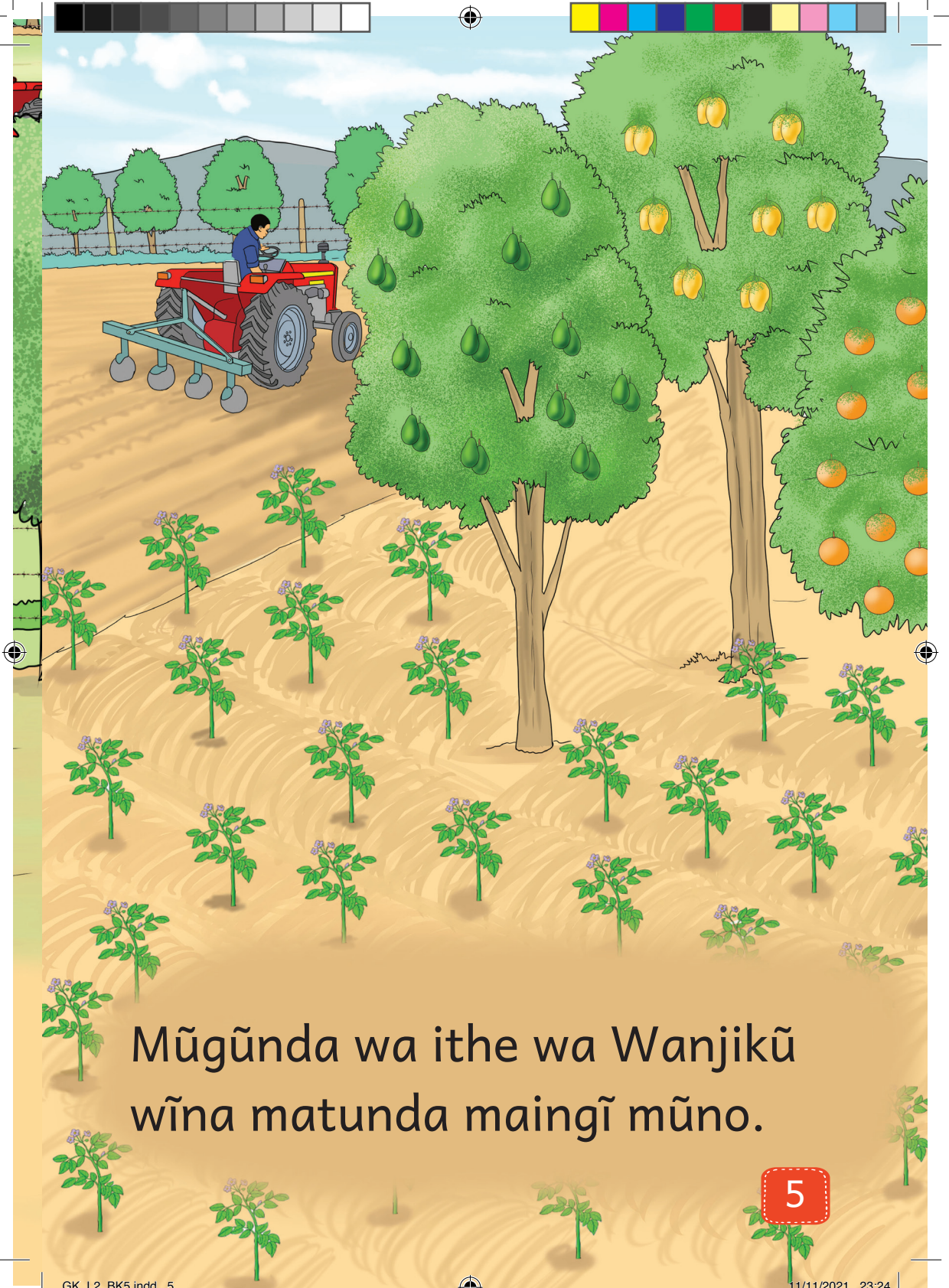
Mūciī ūyū wī itūūra rīrī mītī
mīingī mūno.

3





Ĩno nĩyo njĩra ya gũthiĩ gwa
ithe wa Wanjikũ.



Mūgūnda wa ithe wa Wanjikū
wīna matunda maingī mūno.

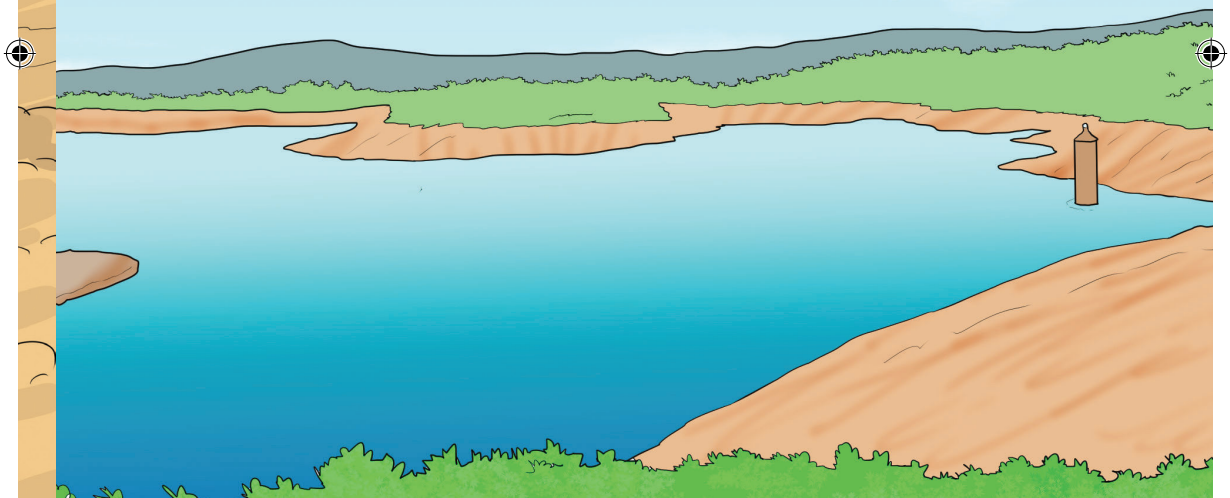




Itinga rīrarīma mūgūnda wa
ithe wa Wanjikū

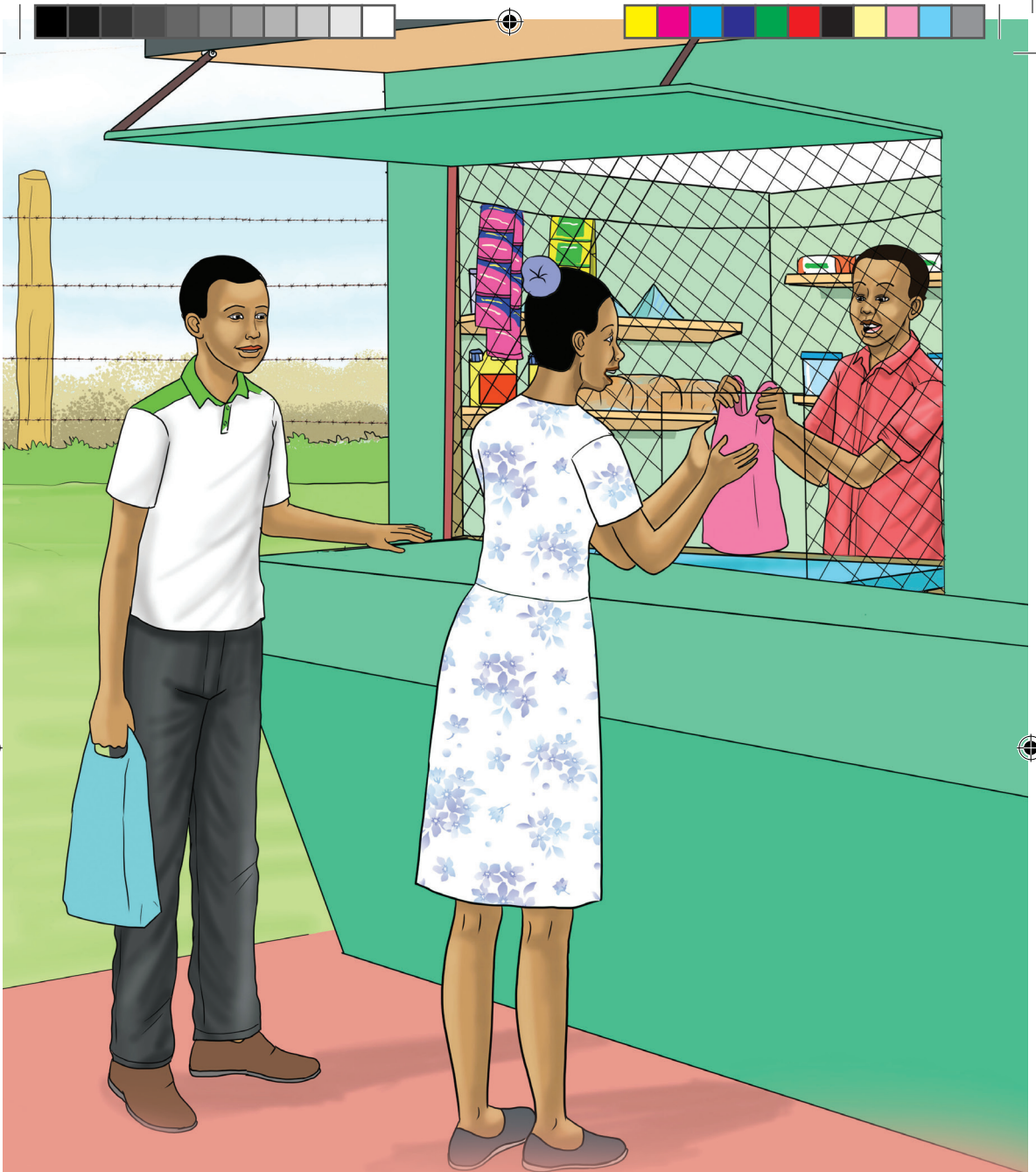
6





Maĩ ma ndemu ãno nĩmo
maitagĩrĩrio mĩtunda.





Nduka ñno ya ithe wa Wanjikũ
ñna indo nyingĩ mũno.

8