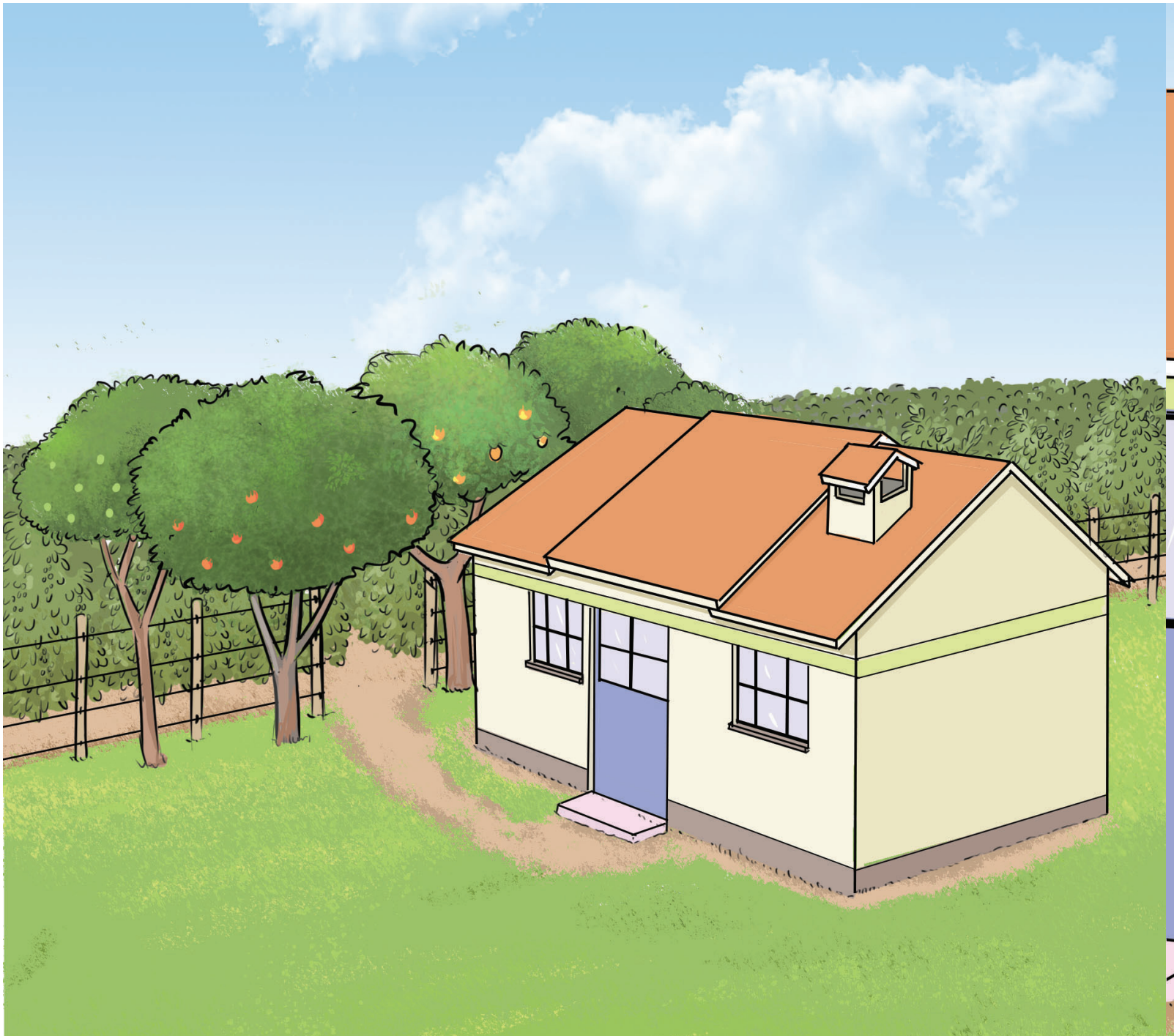


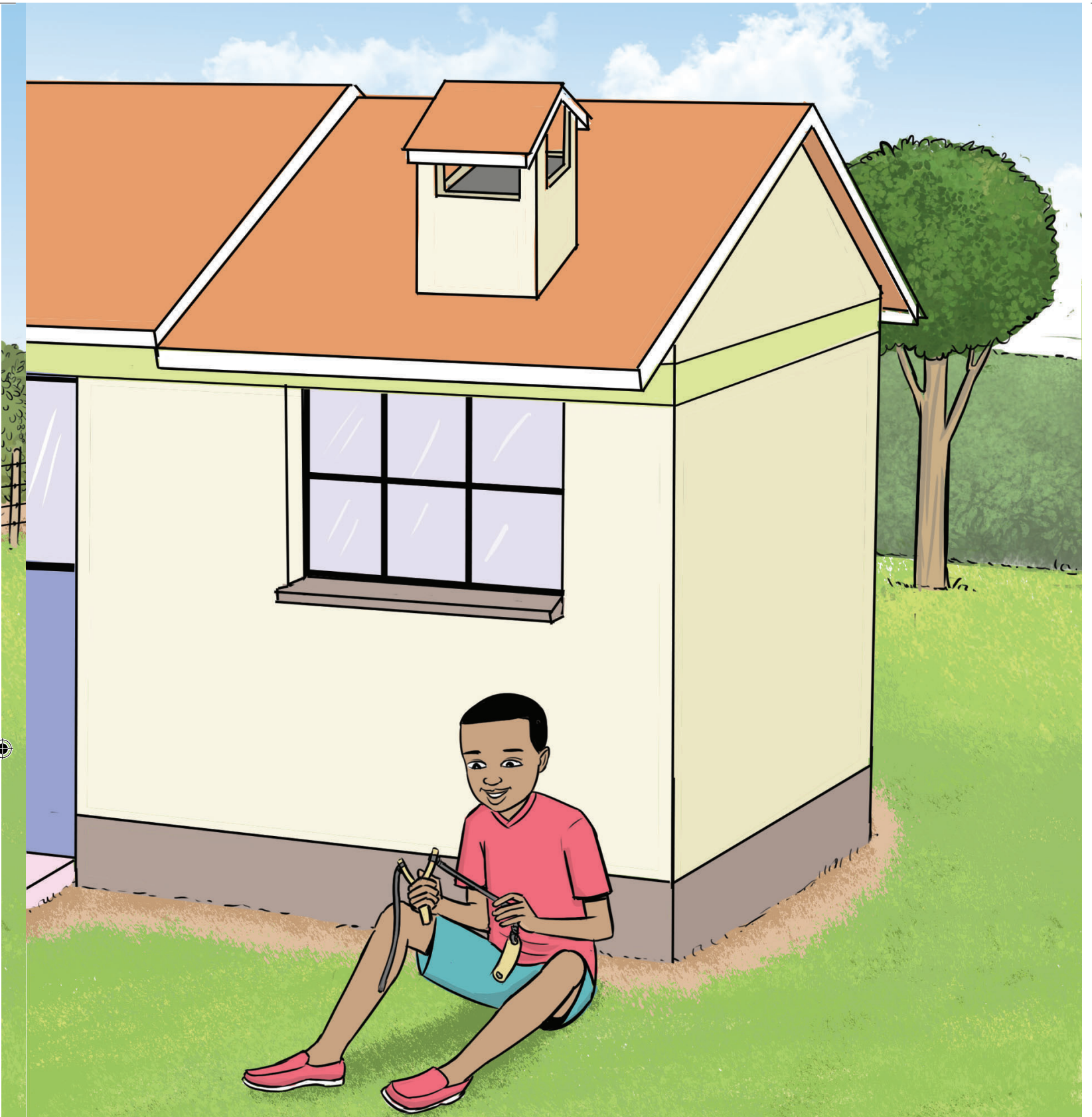
Muno mungo mwabanga Masibo. Mungo mwabwe  
mulimo enju ye bikio.





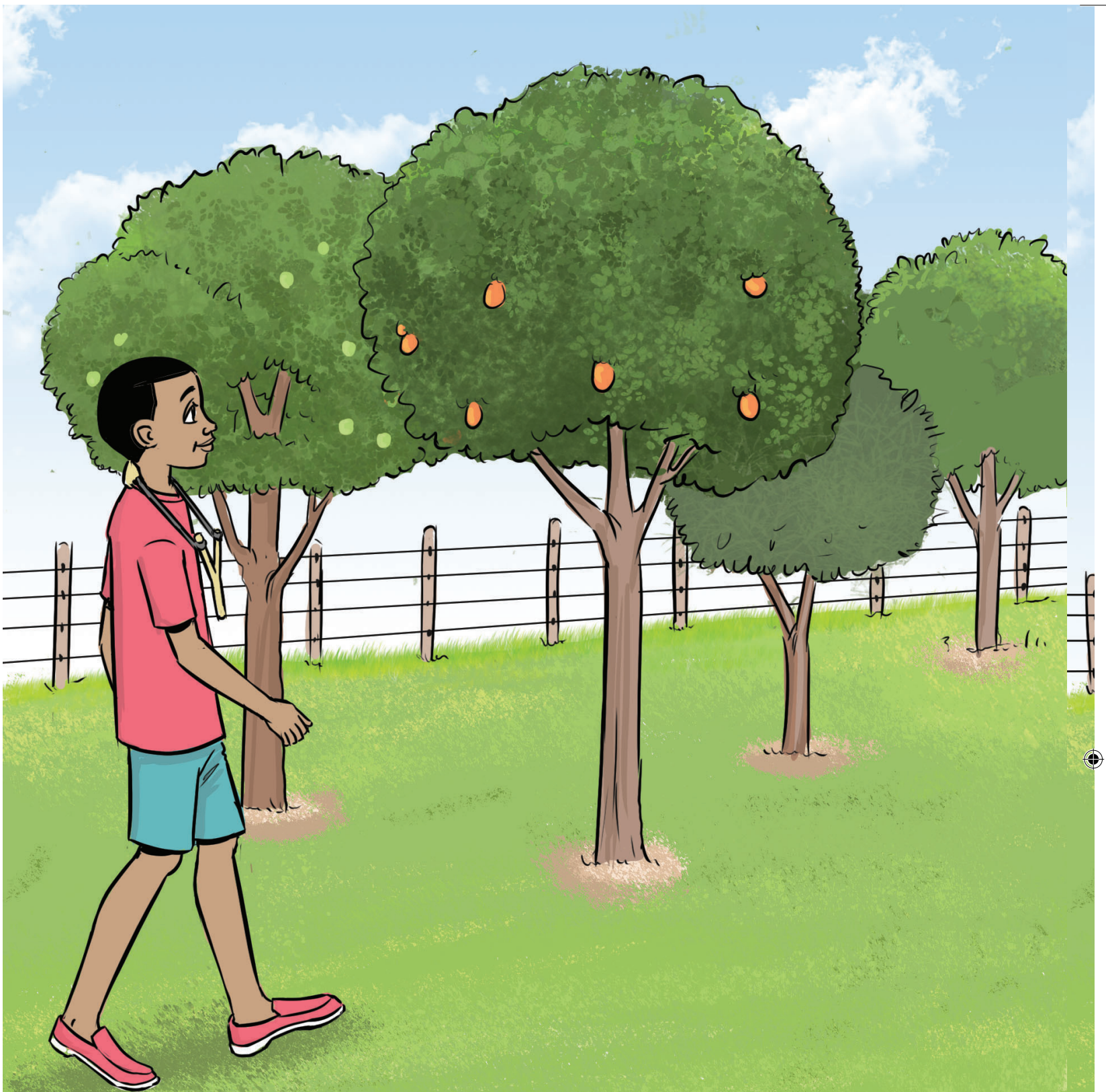
Mungo mwabwe mulimo kimisala. Kimisala kino kie kamatunda. Kimisala kino kili simbi nende lumako lwe ekawa.





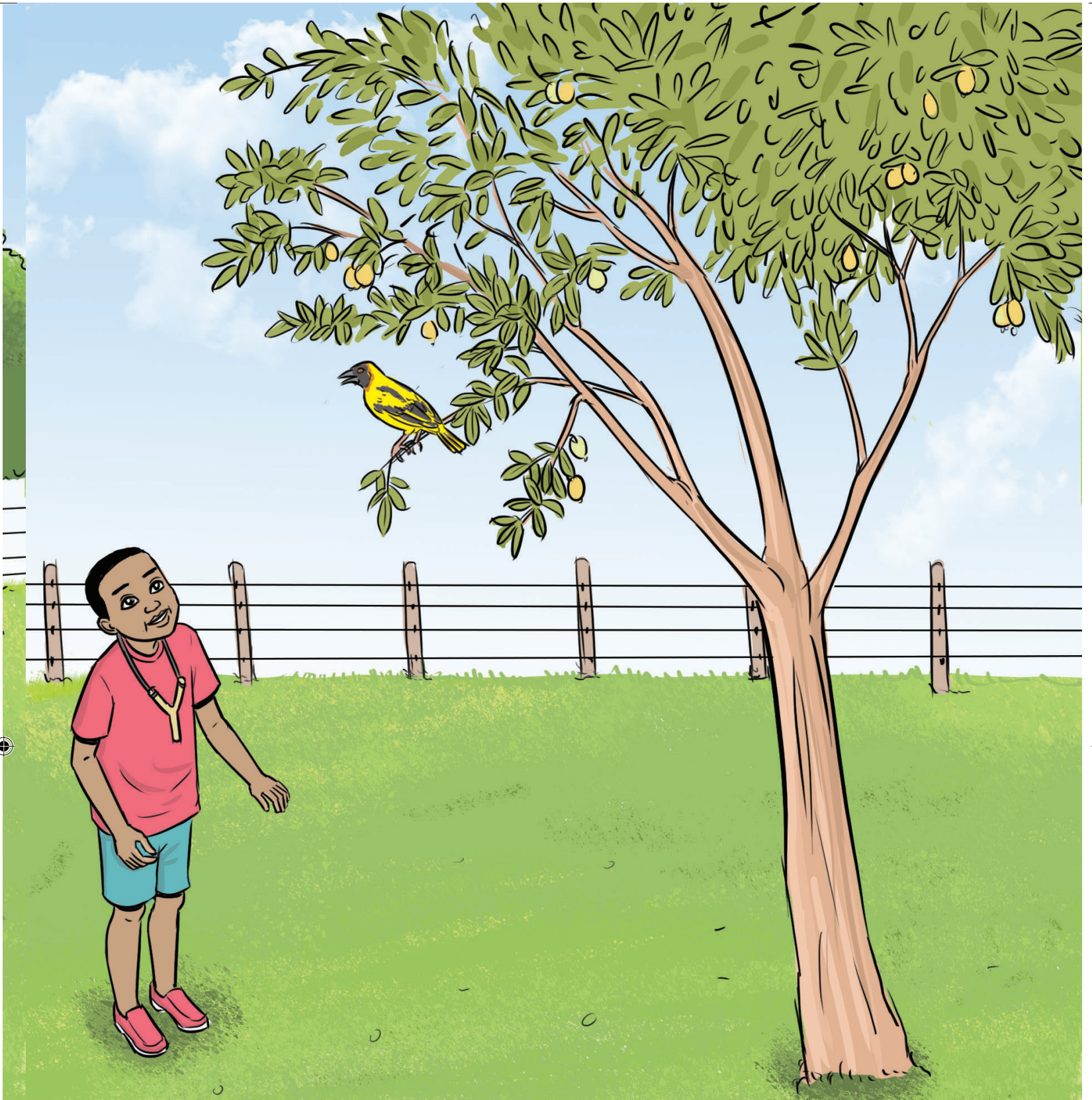
Endalo ndala Masibo karema lusakia kang'ona  
efandiri.





Masibo kachaka khukenda nende efandiri yewe mwikosi. Masibo kaba nayima khupa chisoko mungo mwabwe.





Masibo nali asi we kumupera, esoko yecha yakwakho. Masibo kalola mungaki mala kabona esoko.





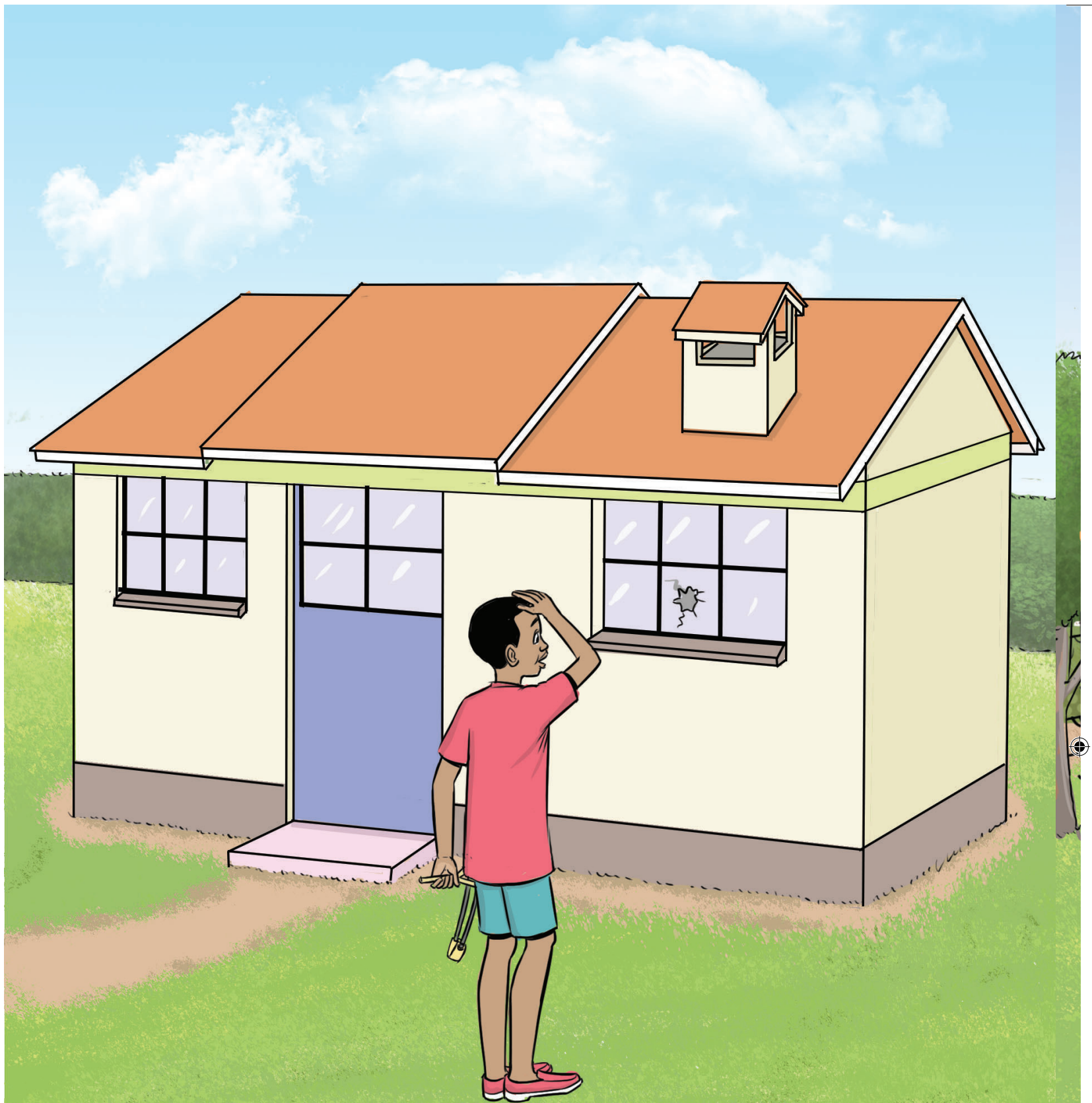
Masibo karusia efandiri yewe mwikosi. Mala  
kayima khabale.





Masibo kakhwesa efandiri kape esoko. Masibo khulekhula efandiri khabale khupa esoko tawe.

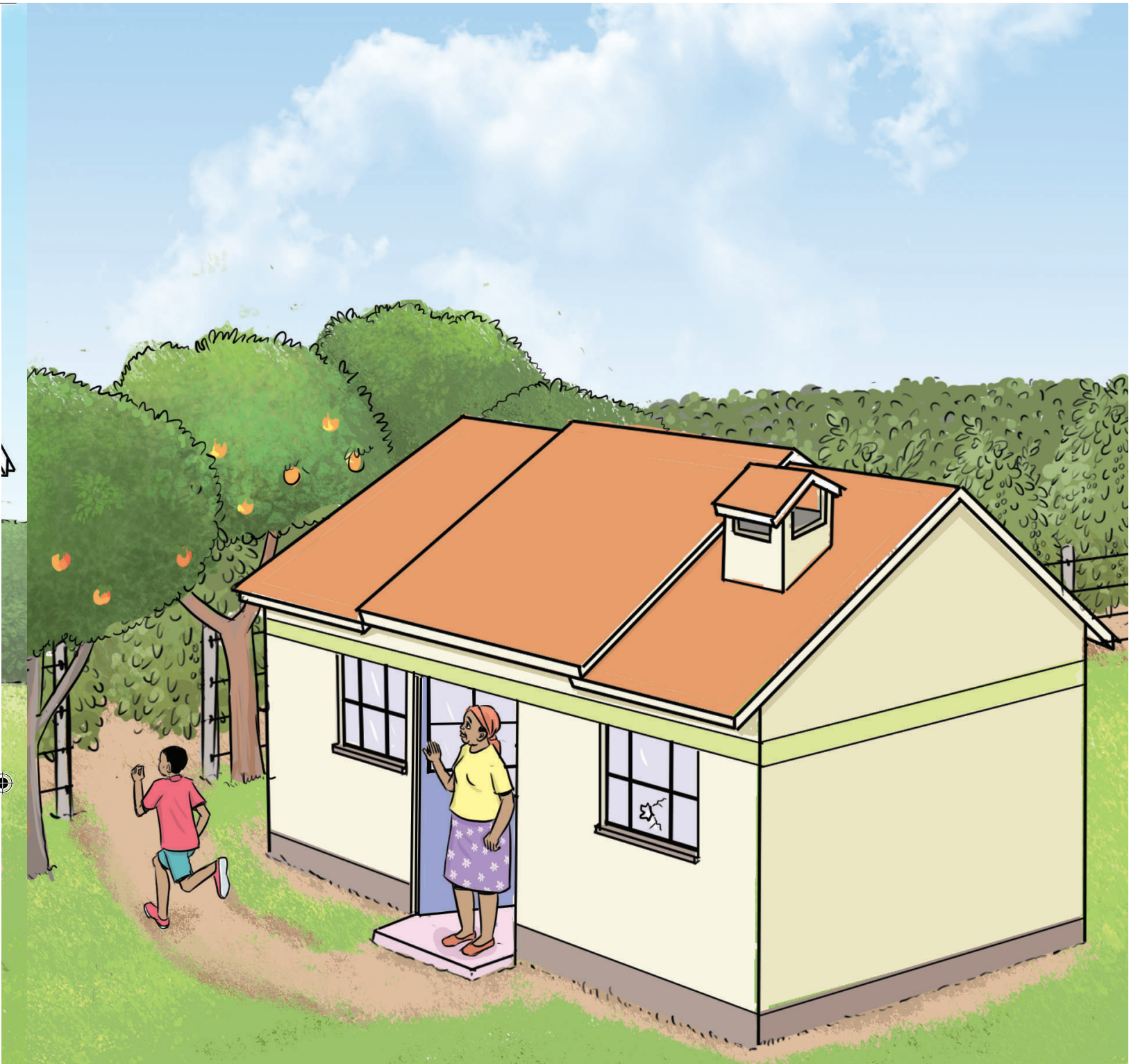




Khabale khabira mungaki. Khabale akho khukobola  
asi khapa sikio sie litirisia lie enju yabwe.







Masibo keyendekhelela mala katima mukawa eli simbi nende mungo mwabwe. “Masibo wakhapa sikio?” mayi kaloma nekama munju.





Mayi wewe kamuyima mala kamunyola mukawa  
nende efandiri. Masibo abele karire.





“Efandiri embi khubana, okhapila chinyuni ta.  
Wabone wakhara sikio,” mayi wewe kamubolela.





Mayi wewe lundi kamuboleta ali khukhwira chinyuni bubi. Masibo kawelesia mayi wewe efandiri mala kalekha khukhupa chinyuni.

