



Luno omwana omukhana kebulwe musirekere sia Ihithe.
Ihithe sirekere sititi sili Nyeri akari kari we Mukenya.
Mayi wo omwana asangalile.

Balosi bekhale asi enje we enju. Bili bise bia asubui.
Liliisi lilikho libuuya munju ndala eli mungo. Kamakhese
kakonile amuliango we chinju chiikale.

Balosi basangalile. Barerire biakhulia lukano ne lukano.
Balosi bechile nende kamakanda, sikhubi, bufu, buyu
bupakhe, chinyenyi, bilasi, kamatore kamabisi, kamarofu
nende bibindi bikali.





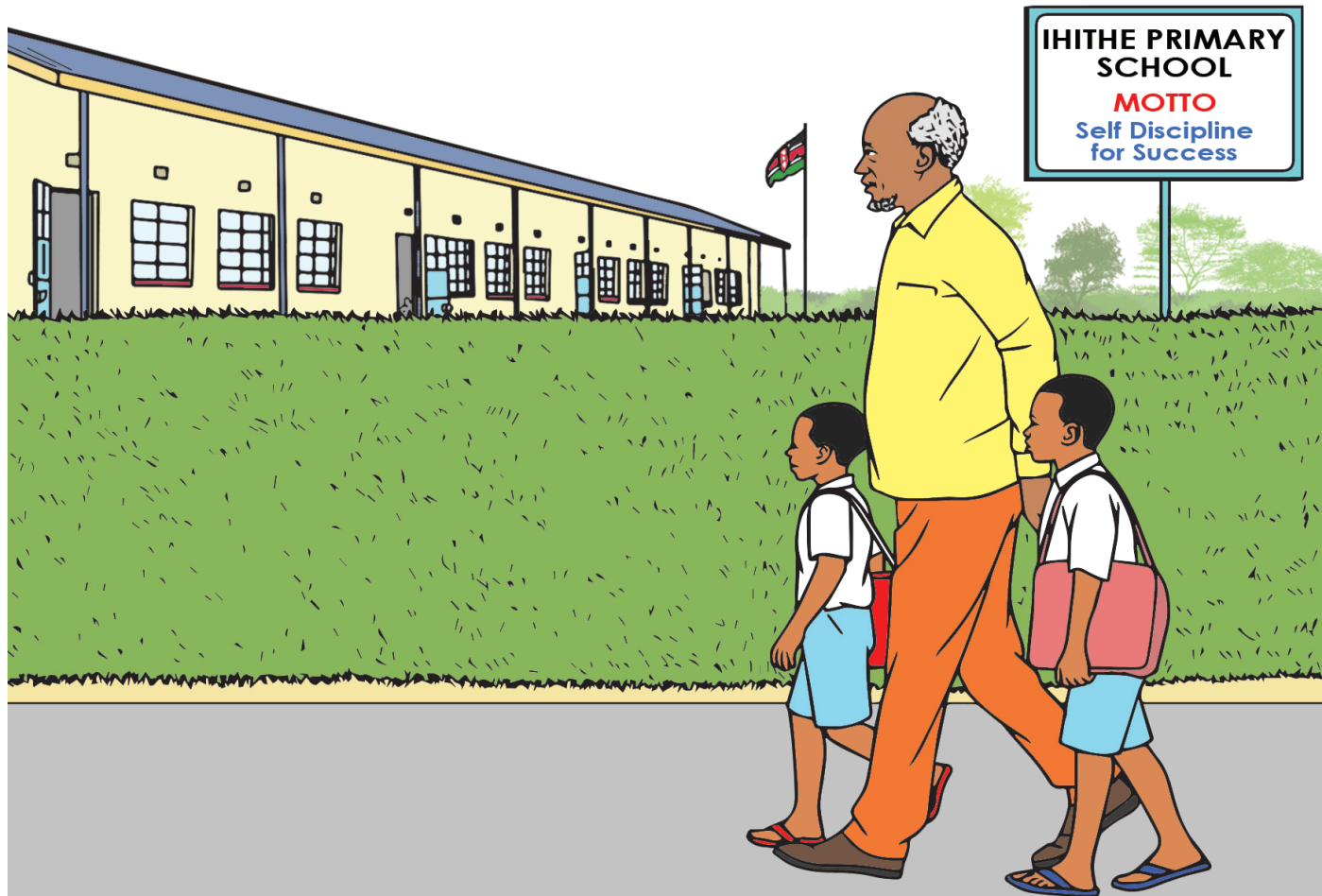
Lisina lio omwana bali Wangari. Lisina lilayi lio omukhana wamiliya. Wangari ali nende bulamu. Alikho akololosia bikhono biewe. Lundi alikho asamba bikele. Ali nga owenya khupurukha.

Mayi wa Wangari kekhoyile. Papa wewe yesi kekhoyile. Oyuno ali omwana wabwe wa khataru khukhwibulwa. Yino eli endalo ye busangafu mungo muno. Balebe, basale nende bamenyani babwe bechile khubona omwana wibulwe.

Kumulukha kumubofu kulabao luno. Bibindu bie khunywa nende khulia bili bikali.

Biakhulia nga mafuke, enyama enjosie nende kumunyu biosi bilabao. Biekhunywa nga buyu bupakhe, echai nende kamabele kamabou biosi bilabao. Okhuno khukhwakanila Wangari musirekere. Bosi balamwimbila omukhana kimienya.





Wangari kakhula mala kakesiya. Wangari kaba omukosi wa buli omundu musikere. Babandu bosu basubila Wangari omusime wa Wele Khakaba. Wangari nga kosia kimiko kitaru papa wewe kauya musirekere sia Ihithe. Bamenyani bosu be musirekere bakhallala.

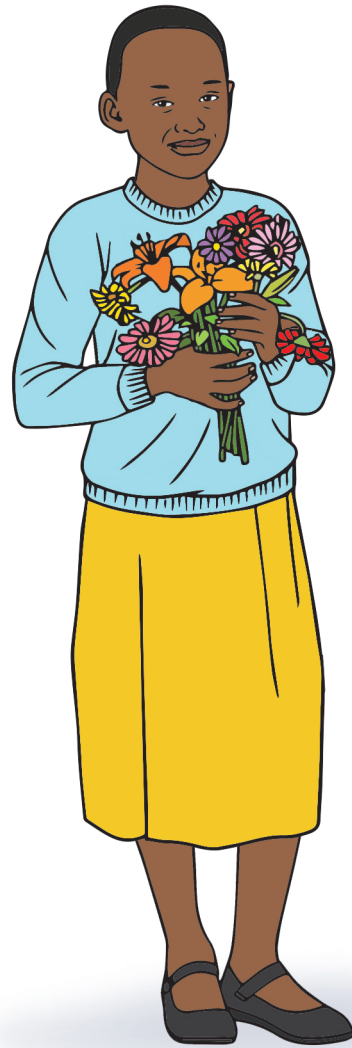
Wangari kaba nende bawandaye babili. Wandaye omukhulu kaba Nderitu naye omukekhe bamulanga bali Wambugu. Nderitu nende Wambugu balila lukali endalo papa, mayi nende Wangari bauya.

Sabacha esikuli chindalo chibili ta. Abele bamenyile nende kuka nende kukhu wabwe. Bekhala engo khukhuaya kamakhese ka kuka wabwe. Endalo ya khataru, kuka kabaila musikuli sia Ihithe.





Papa wa Wangari kaba
kauyile Nakuru. Etauni
yino yaba simbi nende
enyanja embalayi.
Enyanja eyo bali Nakuru.
Enyanja yino eli nende
chinyuni bali flamingo.



Papa wa Wangari
kasamulanga khukasi
Nakuru. Kakholanga
ekasi mumukunda
kumubofu kwa John
Fletcher. Buli asubui
kakhamanga kamabele.
Kumuusi kaayanga
chikhafu che khukhama mumailo.

Wangari kaba kachoile. Ali nende kimiko sita. Kasima
khulondana nende papa wewe nacha mumukunda.
Wangari khukhwosia kimiko kino kanala khulondana
nende papa wewe mumukunda. Kaba areba papa wewe
kamarebo kamakali ke bimelewa nabali mumukunda.
Kabutanga kamaua naayilila mayi wewe.





Wangari kakhoyebwa khucha esikuli. Sikuli sesiaba mumukunda nisio basasi ba Wangari bakholanga ekasi ta. Nali nende kimiko saba papa wewe kamukobosia nende mayi wewe Ihithe. Bawandaye bekhoya khubona Wangari lundi. Musilo omwo sebakona tawe, Wangari kababolela chimbakha chingali cha Nakuru.

Kababolela bimelwa nibo kabona eyo. Chikhafu che khukhama, kamakhese nende bibindu bibindi bikali. Wangari kaba kasima kumukunda okwo. Papa wabwe kakobola Nakuru endalo elondakho. Kabalekha Wangari



nende mayi wabwe Ihithe. Nderitu nende Wambugu basangala khusikala nende Wangari ne mayi wabwe engo lundi.

Khumwiko kwa munane, kuka kamuila omwikhulu wewe musikuli sia Ihithe. Nderitu nende Wambugu basangala khubona

Wangari esikuli. Bawandaye bamukesia musikuli mwosi. Wangari kasangalila kimisala nikiyo kabona musikuli.





Wangari kekhoza khusoma esikuli. Kasima babalimu. Mwalimu wewe bamulanga bali Madamu Mutahi. Madamu Mutahi kabekisia kimienya. Kabakanila chingano chingali. Wangari yesi kababolela chimbakha cha Nakuru. Bise bilala Wangari kalilanga. Kaba ekomba papa wewe. Kenya khukobola mumukunda kumubofu.

Buli endalo nakobola engo khukhwama esikuli, kabona kamaua khungila. Kabuta kamaua nacha khuokesia kukhu wewe. Kukhu wewe kamutiukha lisina omukhana we kimisala sikila chilomo chewe chingali chaba che bimelwa nende kimisala.

Wangari nakama musikuli abele ayeta mayi wewe khurennya chikhu musilibwa. Lundi kayeta mayi wewe khucha kamechi muluchi mwa Kagumo munyongesa. Buli munyongesa bosu bachichanga muluchi khusinga chingubo. Nderitu nende Wambugu nabo basokanga mulitisi liaba simbi nende luluchi.





Wangari nali nende kimiko kumi na mocha, bamuwuyisia khusikuli sia St Cecilia Mathari. Mwalimu Mutahi sekasangala Wangari khuuya musikuli siewe tawe. Kaba kasima Wangari po! Mwalimu kaloma ali Wangari kaba omusomi omukesi mukilasi. Wangari kayetanga babasie mukilasi. Basomi babasie bakhallala mala balila sikila Wangari abele alikho auya musikuli siabwe.



Nderitu nende Wambugu bosu basulunya. Wangari sakaba ne nabo musikuli nende engo tawe. Bosu benya bamwonge Wangari musikuli siya. Mayi wabwe kababolela ali sikuli sie khuranga sia St Cecilia siaba sie bakhana bong'ene. Lundi kababolela St. Cecilia sili sie basomi khukonayo. Sabakobola engo buli busiele tawe.

Wangari sekakenda khucha esikuli ta. Sakakhoyebwa khucha mumukunda nga kaba engo tawe. Mbao khucha kamechi muluchi lwa Kagumo ta. Khurennya chikhu abele sekhulio ta. Kumulimo kwewe kwaba khusoma khwong'ene.





Wangari
nali esikuli,
kekombanga
lukendo lwe
emukunda
nende papa
wewe. Kekomba
khukenda
khuluchi.
Kekomba



khurenya chikhu. Chindalo nicho afungile esikuli
kekhozanga khukhwakanana nende bawandaye, mayi
wewe nende bamwenywa bosu ba Ihithe.

Kimiko kine khuwa, Wangari katabusia kamasomo kewe
musikuli sie khuranga sia St.Cecilia. Kaba we khuranga
mukilasi yewe. Kacha musikuli sie khabili sie bakhana sia
Loreto. Kasoma ne kamani mala kabira likela bulayi.

Wangari kaba omusomi we khuranga mulirambo liosi.
Babalimu, basasi nende basomi babasie ba Loreto
basangalila endalo yosi Wangari khutula lukoye
mulirambo liosi. Buli omundu musikere kalosia embakha
ya Wangari Muta khubira likela. Bakenya bosu baulila
niko omukhana wabwe akholile. Bosu bekhoyela
Wangari.





Kumwaka kwarakho,
Wangari Muta
kanyola buyeti bwe
khusomela musibala
sie engelekha Amerika.
Kasoma musisomelo
sie muyunifasiti sia
Mount Scholarstica
Atchison, Kansas.
Wangari kasoma
kimiko kine kiosi mala
kanyola lupapulo lwe
etikirii.



Khunyola etikirii
ye khuranga, kacha musisomelo sie muyunifasiti sia
Pittsbrough mala kanyola etikirii ya khabili. Kacha
kabolela babandu bubi bwe khukhuonaka kumuya. Buli
lwosi kakhebusia babandu ali sibala sikhoya kimisala
kimikali. Kukhu wewe kapa abwene khumutiukha
omukhana we kimisala.

Khukobola Mukenya kanyola kimilimo musisomelo sie
khungaki. Kekhoya khukhola nende babandu lukano na
lukano. Lumalilisi kakanana nende Mwangi Mathai mala
kamubelakho.





Omukhana we kimisala nono kaba mayi. Omwana wabwe omubele bamulanga bali Waweru. Wa khabili kaba omukhana bali Wanjira. Waweru kasangala khuba nende wandaye omukhana. Mayi wabwe, Wangari kaakanila mubusangafu omwana omuchwenge omukhana. Kamusabila yesi abe omukhana we kimisala.

Omwana wa khataru omutua yesi kaba omukhana. Lisina liewe liaba bali Muta. Waweru nende Wanjira sabakona tawe. Bekomba khukhwikhala simbi omutua wabwe.

Bise biosi bino, mayi wabwe kakenda mubirekere nabiala kimisala. Kang'ona situti sie kimisala mubirekere bikali. Kabaramo kamani ke khubiala kimisala. Kabolela balosi nabenya khurennya chikhu babiale kimisala.





Wangari kaba kasima babana bewe. Kasima bawandaye basoreri lukali. Kasima bawandaye bewe bakhana bosilukali. Karera bawandaye bakhana Nairobi. Kabekulila lituka lititi. Basangala bosilukali. Wangari kachilila khubiala kimisala nasisoma. Kasoma mala kanyola etikirii ya khataru. Mbao omukhasi yesiyesi wamuolakho mulirambo liosi ta. Nono kasomia muyunifasiti.

Kafuma mubasomi bosilukali be musisomelo sikhongo. Kabolela basomi ali khubiala kimisala sabakhoyebwe khuba nende lupapulolwe etipuloma ta. Kabawelesia bisala bie musituti babiale muyunifasiti mwosi.





Omukhana we kimisala aluno ari profesa niye. Bamenywa ba Ihithe balomela abuwanga bulayi bwa Wangari omukhana wabwe. Buli omumenywa we Mukenya amumanyile. Lisina lieve liafuma buli abundu Mukenya mwosi.

Kachakisia bituti bie kimisala Mukenya mwosi. Kakelekela balosi boshi khuyima bumicho bwe kimisala. Kababolela ali bumicho nibwo babiala buli bumicho bwe kumulembe. Balosi boshi bachakisia bituti mubirekere biabwe.

Kimiesi kie efula engali babiala kimisala kimikali mumikunda kiabwe. Babiala kimisala mumikunda kikhalimo bimelwa tawe. Chindalo ngekhe chiri chikhu chakucha mala babandu bachaka khurennya. Kamanda kosi kakhila po! Babandu boshi bafumia Wangari profesa we kimisala.





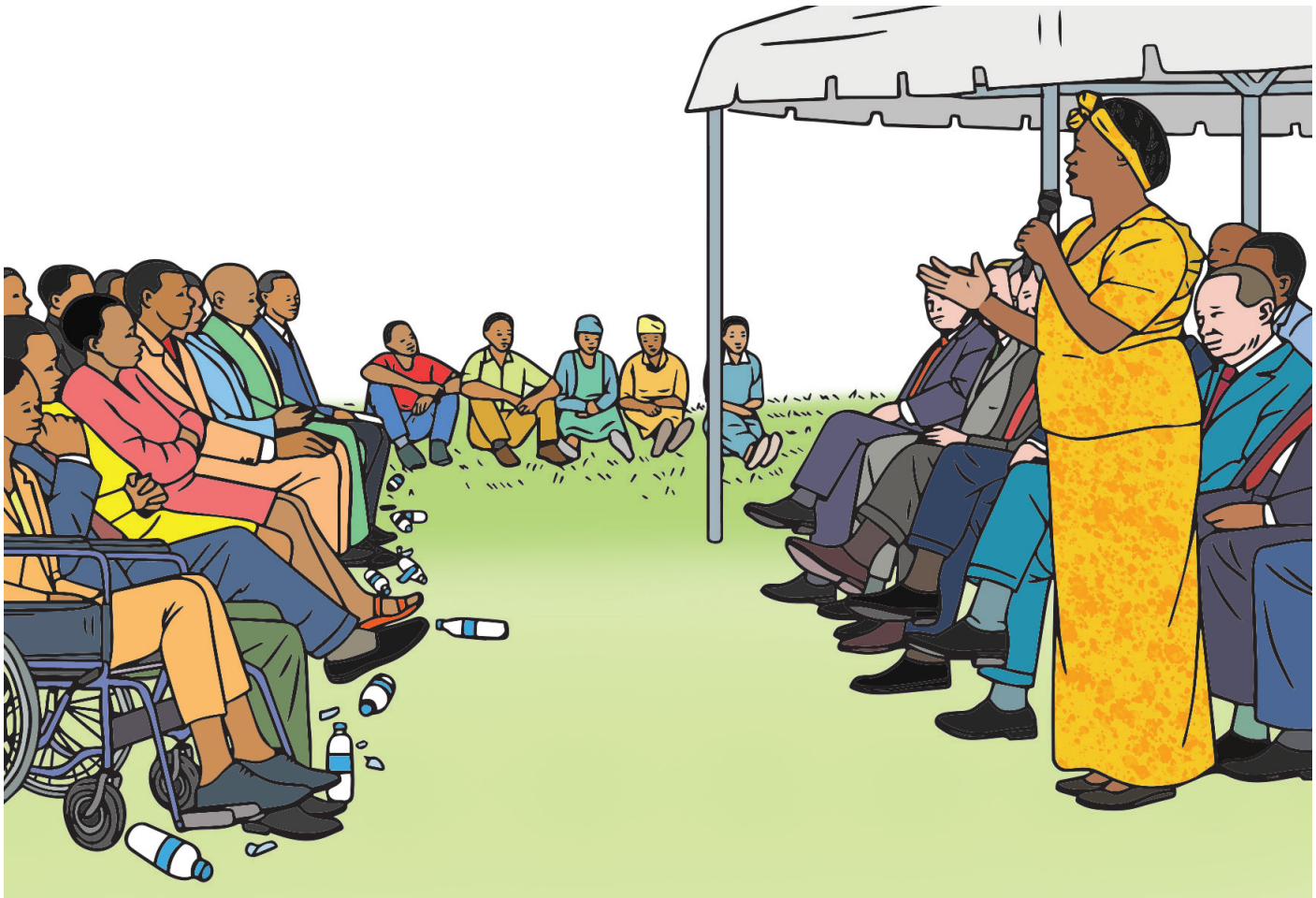
Profesa Wangari
kakhebusia babandu
khupara khabili
nabakwisia kumusala.
Kakania babandu
khurema kimisala
nabombekhela chinju.
Kenya kumulembe
nende bibindu bie
mulimenya liefwe.
Kenya babandu
bamenyele mumulembe.
Kakendela bibala bikali
bie engelekha.



Babandu bakali
musibala baulila Wangari nafumia kimisala. Kabolela
babandu khulondekhana nende kimilimo kie bibindu
bie mulimenya liefwe. Kasomia bakali. Kaandika bitabu
bikali. Bamenywa ba Tetu bamurobora kabira mala
kacha mupunge.

Profesa kekela omukekhe wo omwimelesi we buinda
bwe bibindu bie mulimeya liefwe. Kekomba khuba
omwimelesi omukhongo we lirambo liosi lia Kenya.
Babandu bosu barakho lulwala khubikholwa nibo kaba
nakhola. Simanyisio siewe sie kumukanda kwewe siaba
kumusala kwe kumurembe. Omukhana we kimisala kenya
khuba omuruki omukhongo we lirambo lia Kenya.





Omukhana we kimisala kanyola bianwa bikali. Babandu basangalila kumulimo kwewe kwe kumulembe nende buinda bwe bibindu bie mulimenya liefwe. Kenya bumiliyu bwe buinda bwe bibindu bie mulimenya liefwe. Endalo ndala profesa kaba akelekela babandu musiwanja. Endalo eyo kumumu kwaba kwarafue. Bakeni baakanila kamechi ke muchupa. Khwinyokha khuloma, kaukia barekeresi bewe.

“Lolakho nono nio bikaratasi biboa chichupa, chichupa nende bifunikho nio bili,” kasilakho. “Khembona bikaratasi buli abundu musiwanja muno, Sekali kario?” Profesa Wangari kareba.

Bakeni babona chisoni. Buli omukeni kangala bikaratasi ebio nende chichupa nicho bamwatile.

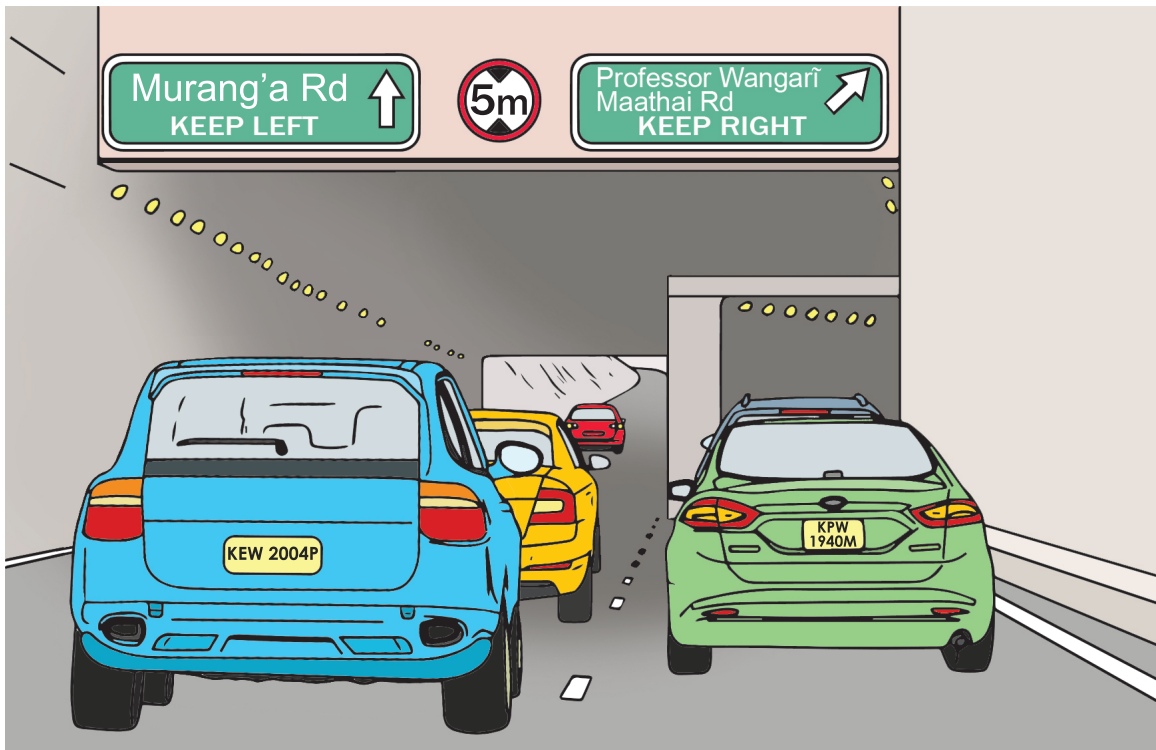




Omukhana we kimisala abele ali khungila ye kimilembe. Profesa Wangari Muta Maathai kakhila sianwa sikhongo sia Nobel Peace Prize. Kamanyikhana khukhangaranila buinda bwe bibindu bie mulimenya liefwe nende kumulembe. Kaba omukhasi we khuranga muafrika khukhila sianwa sikhongo sia Nobel Peace Prize.

Bakenya bosu basangalila sianwa sibofu. Afrika emufu yosi yekhoyela sianwa. Kachilila khubaramo kumoyo kwe khubiala kimisala.





Profesa Wangari kabakanila lukano lwe enyuni enditi yaonia kumusiru kumubofu khuya kumulilo. Katasakho khuyeta babandu khubiala kimisala kimikali. Chaba chingunyi endalo ya 25 kumwesi kwa tisa 2011 profesa Wangari Maathai nalota ekombe. Kaba nende kimiko 71. Lisanduku liewe liaba lie kamakololwe nende kimilele. Liikomba liewe liaba mbo omundu akharemakho kumusala bali amung'onela lisandaku lie chimbao tawe. Khwisanduku liewe babimbakho elembela ye lirambo lia Kenya.

Omusale wewe mulala kaloma “Namukhafumia omukhasi yuno we bunyindafu nende kamani tawe, kimisala kilamufumisilia khukhupa chimbi.”

Babandu bakali baloma bali mumasika kewe babandu bakali balila kimikhula kimikali kie kamasika! Khukhwama nalota ekombe, bikhola bikali biakholekhe khufumia lisina liewe musibala siosi. Mukenya engila yafuma bakitiukha lisina khukhwama engila ya Forest Road yekela Wangari Maathai Road.

