



Dikhomphutha tsa Tshilidzi Marwala tse bohlale

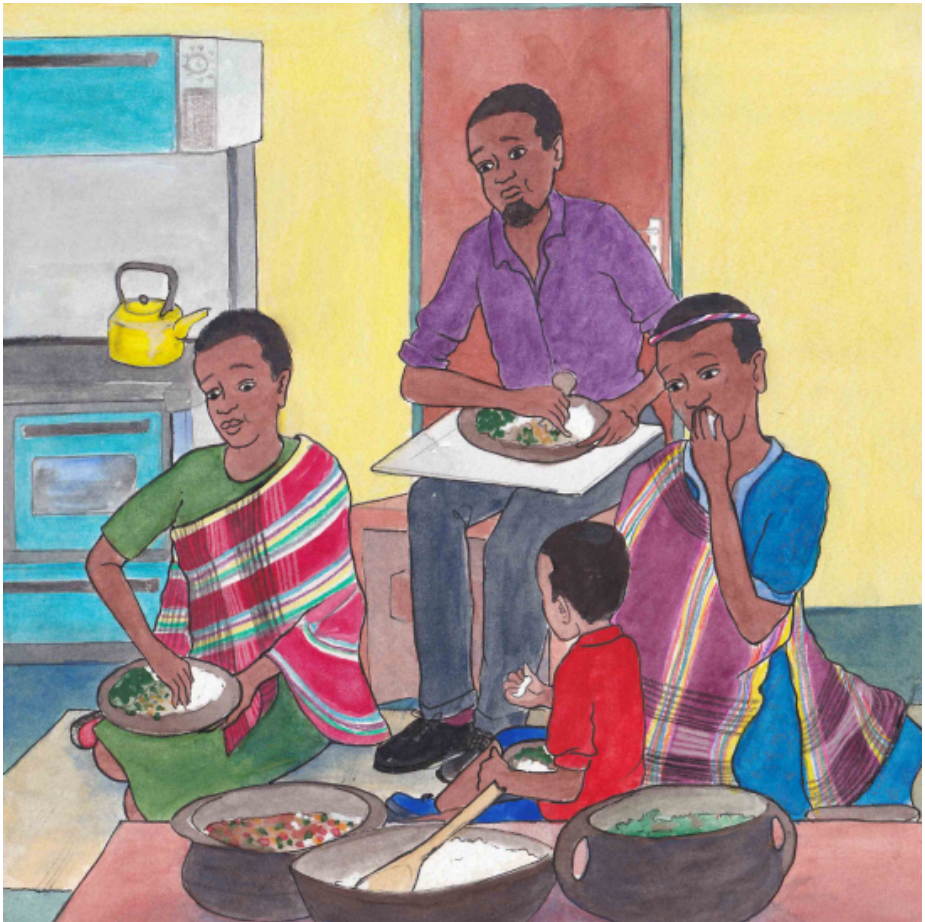
Ndivhuho Mutsila
Thulisile Shongwe



Pale ena e ka ha Tshilidzi Marwala.

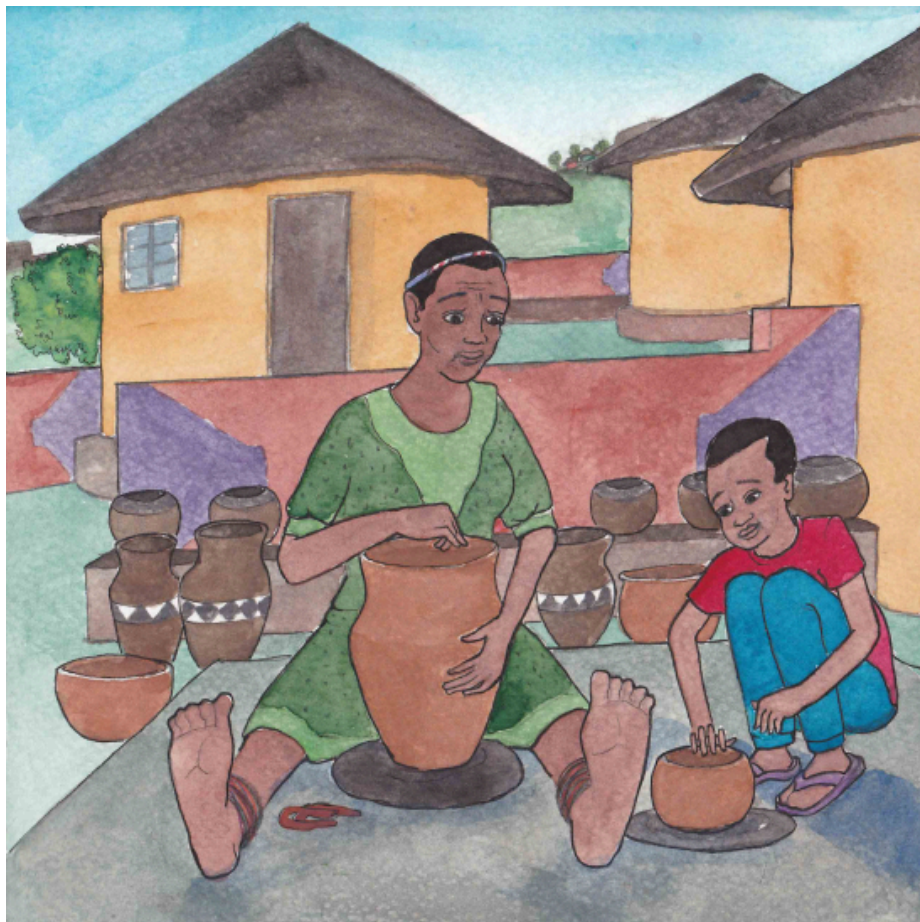
Ke Rasaenese wa dikomporo le Moinjiniere wa
Metjhini wa mona Afrika Borwa.

Ena ke pale ya kamoo Tshilidzi ya tswang
Duthuni e bileng setsebi sa matjhaba Saenseng
le Theknolojeng.



Tshilidzi Marwala o tswaletswe motsaneng wa mahaeng wa Duthuni, Limpopo. O ne a dula le batswadi ba hae le nkgonae Tshianeone.

Tshianeone o ne bopa dipitsa tse ntle ka letsopa. Moralo wa dipitsa tsa hae tsa setso o ne o bontsha boinjiniere ba tlhaho.



Boinjiniere ke saense ya ho rala le ho bopa dintho tse jwaloka metjhini le meaho.

Tshiane o ne a tseba boinjeniere ba ho bopa dipitsa tsa setso tsa letsopa.

Tshilidzi o ne a rata ho boha nkgonae ha a bopa dipitsa, le ho mo thusa.



O ile a qala ka ho etsa sedikadikwe se sephara bakeng sa motheo wa pitsa.

Kamora moo o ile a bopa mahlakore a rono a pitsa ka letsopa le lengatanyana.

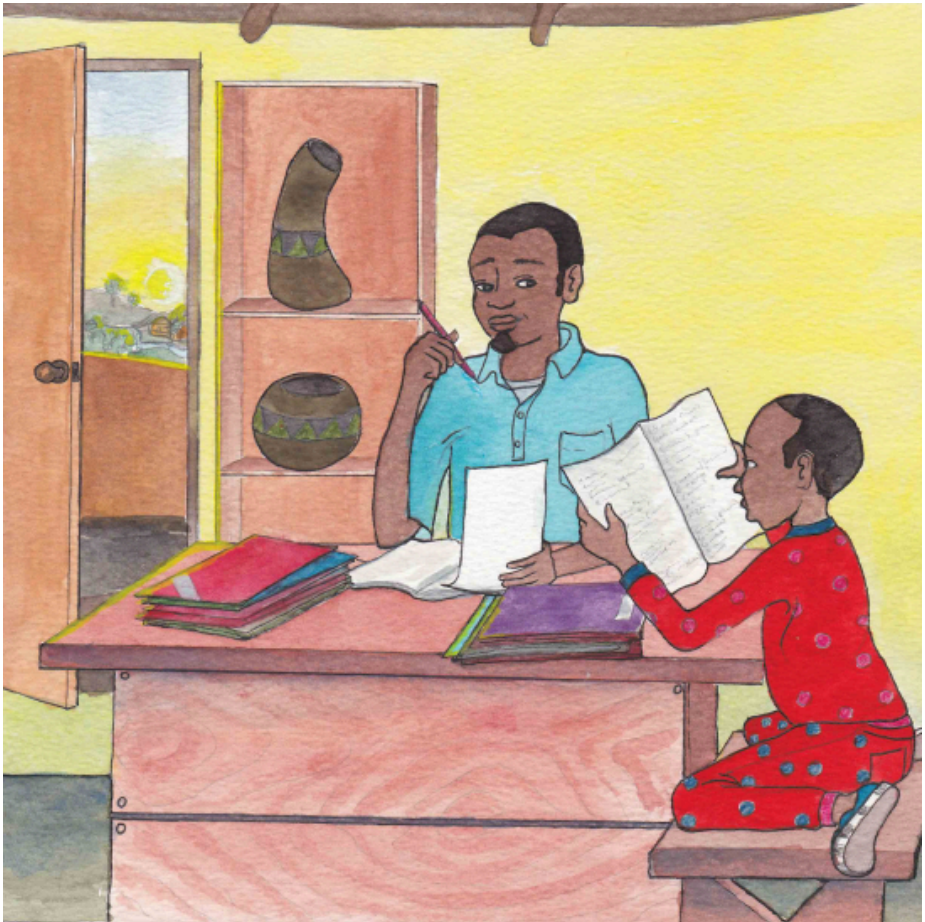
Nkgono oile a omisa dipitsa letsatsing ebe o di kenya mollong.



Mollo o ne o tjhesa haholo ho ka kgona ho baka letsopa.

Ho baka letsopa ka motjheso o moholo, ho etsa hore metsi ohle a letsopeng a ome. Hono ho etsa hore letsopa le be thata haholo.

Dipitsa tsa nkgono di ne di le thata mme di dula nako e telele.



Lerato la Tshilidzi la Saense le boinjiniere o ne a le fumane le ho ntatae hape.

Ntate Marwala o ne a ruta dipalo sekolong sa Motseng wa habo.

Pele a ithuta ka katiso sekolong, Tshilidzi o ithutile katiso ka ho bala dibuka tsa ntatae.



Tshilidzi o ne a dula a lohothela ho tseba dintho. Busiu o ne a nka totjhe ya ntatae a e kgantshetsa lehodimong ho bona moo le fellang!

Ha a qeta sekolong sa poraemari a falla motsaneng wabo a ya sekolong sa bodulo toropong ya Shayandima.



Sekolo sa bodulo se ne se kgahla hobane o ile a kopana le batho ba batjha. O ile a ithuta ho phedisana le batho ba fapaneng.

Tshilidzi o ile a ya kena sekolo sa sekondari sa Mbilwi.

O ile a tsota matitjhere a hae a Dipalo le Saense sekolong. Ba ile ba mo susumetsa ho sebetsa ka thata.

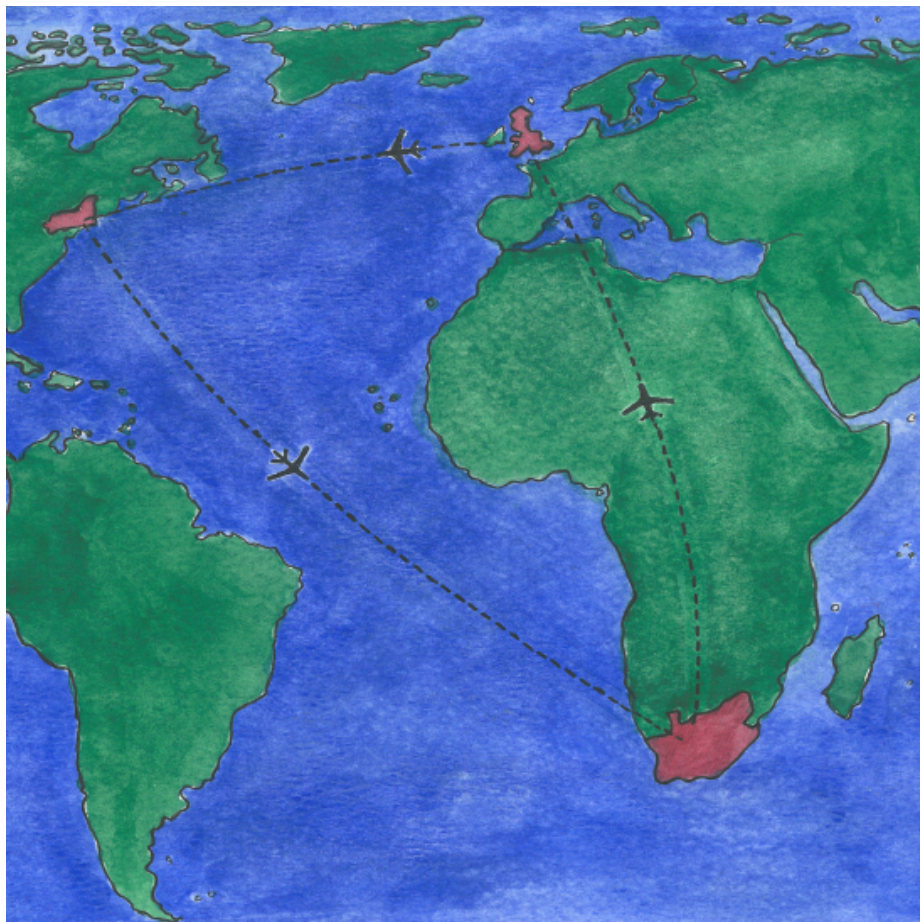


Ka selemo sa hae sa ho qetela sekolong, Tshilidzi o ile a fumana kgao ya '*National Youth Science Olympiad*'.

A boela a fumana tlholo ya leeto la ho ya *London International Youth Science Forum* e neng e le Engelane.

Tshilidzi o ithutetse Boinjeniere ba Metjhini Unibesithing ya Pretoria.

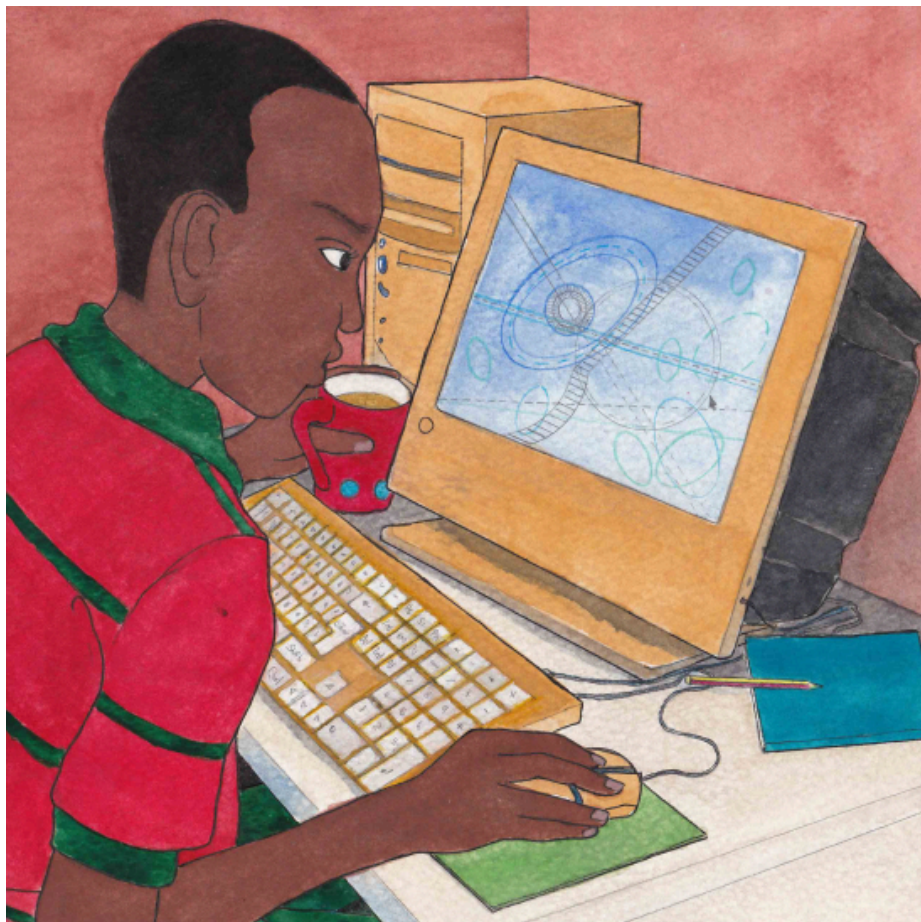
O ile a tswela pele ka dithuto tsa hae Unibesithing ya Cambridge.



Tshilidzi o ne a thahasella ho tseba hore theknoloji e ka fetola maphelo a rona jawing. O ithutile Saense ya dikomporo Engelane.

Kamora moo a ya ithutela Theknoloji le Boinjiniere Amerika.

Kamora dilemo tse ngata tsa ho ithuta, Tshilidzi a nka qeto ya ho tliša tsebo ya hae Afrika Borwa.



O qadile ho sebetsa jwaloka moqapi wa softwerek ya dikomporo, a sebetsa ka bohlale ba maiketsetso.

Bohlale ba maiketso ke ha metjhini e etsa mesebetsi e hlokang bohlale ba batho.

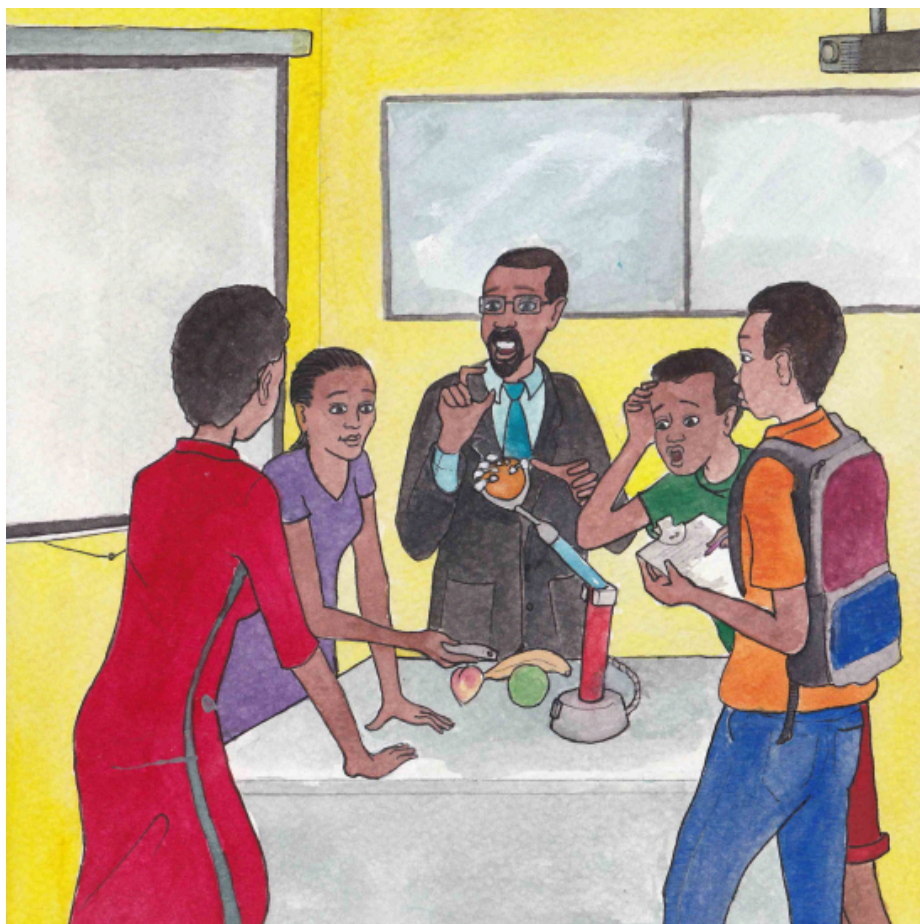
Tshilidzi o hlahisitse lenaneno la softwerek e kgontshang dikomporo ho nkgella le ho latswa!



Kajeno Tshilidzi ke setsebi sa matjhaba sa Boinjiniere ba Metjhini le Saese ya dikomporo.

Ha jwale Moporofesara Marwala o batla ho fumana tsela yeo dikomporo di ka thusang batho ka teng.

Mohlala, Bohlale ba maiketsetso bo ka thusa batho dibankeng, dipetlele le dikolong.



Mosebetsi wa Tshilidzi o tsepame mokgweng oo Theknoloji e ka thusang ho ehlola mesebetsi le ho thusa bohle ho phela maphelo a betere.

O tlatsetsa ka tsebo ka Saense le Theknoloji.

Bophelo ba hae bo bontsha bohlokwa ba thuto, ho sebetsa ka thata le molemo wa ho batla ho tseba!

—Dipotso

1. Ke bomang ba susumeditse Tshilidzi ho ba raseanse? Hobaneng o etjho jwalo?
2. Ke eng seo Tshilidzi a ithutileng sona sekolong sa bodulo?
3. Saense ya dikomporo ke eng? Fuputsa ka sehlooho sena.
4. Mosebetsi wa Diinjiniere tsa Metjhini ke ho etsa eng? Fuputsa ka mosebetsi wa bona.

—Lenane la dibuka tse letotong lena

- Andile Mji
- Asnath Mahapa
- Bongani Mayosi
- Charlotte Maxeke
- Mmantsane Moche Diale
- Mulalo Doyoyo
- Tebello Nyokong
- Tshilidzi Marwala

Pale ena e qapilwe le ho ngolwa ka puo ya
Tshivenda, jwaloka karolo ya porojeke ya 2020
ya Zenex Ulwazi Lwethu ya bdibuka tse
balwang.



Ulwazi Lwethu is a Zenex Foundation funded and initiated project to develop a series of graded and leisure African language readers and teacher support materials. This project is targeted at teaching and supporting learners in the Foundation Phase to improve their home language reading and understanding. The readers have been originated in nine African languages in collaboration with Molteno Institute for Language and Literacies, Nelson Mandela Institute for Education and Rural Development, Room to Read South Africa, and Saide. All resources are developed as Open Education Resources (OER).



NELSON MANDELA
INSTITUTE FOR
EDUCATION AND
RURAL DEVELOPMENT



Room to Read®
World Change Starts with Educated Children®

Your attribution should include the following:

Title: Dikhomphutha tsa Tshilidzi Marwala tse bohlahe

Author/s: Ndihuhlo Mutsila

Translator/s: Maria Vaz

Illustrator/s: Thulisile Shongwe


Assurer/s: Nthabiseng Tsatsi, Mathapelo Morake

Language: Sesotho (South Africa)



© Zenex Foundation - Saide 2023

CC BY includes the following elements:

BY  - Credit must be given to the creator

